



Marking to ATEX 94/9/EC Directive: Ex II 2 G Ex d IIC T5 Gb / II 2 D Ex tb IIIC Db IP66

Zone: 1, 2, 21, 22 , Gas Group IIC

Compliance with: IEC 60079-0 : 2007, IEC 60079-1 : 2007, IEC 60079-31 : 2008

EC Type Examination Certificate: ISSeP 11 ATEX



FEATURES

- Plug and socket with die cast aluminium housing suitable for petroleum and marine locations.
- Different ratings up to 63 Amp. 2, 3 or 4 pins plus earth.
- Interlocked switched socket contacts on the unit are never accessible when live.
- Switching only possible when plug fully inserted and cannot be withdrawn with switch in ON position.
- Nickel plated brass pins embedded in glass reinforced polyamide pin holder.
- Stainless steel screws and M6 internal / external earth studs.
- Socket closing cover with chain: GRP for 16 or 25 Amp., and aluminium for 32 or 63 Amp.
- Cable entry can be from bottom or top side.
- Hub sizes: M20 or M25 for 16 and 25 Amp., M32 or M40 for 32 or 63 Amp.
- Cable entry threads: ISO 965.1 metric as standard . NPT or other threads supplied on request.
- Finish: Electrostatic powder coated or two pack epoxy paint.



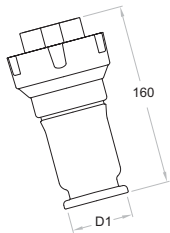
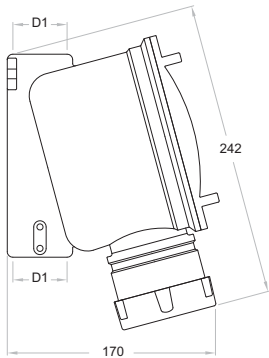
OPTIONS

Voltage transformer in Ex 'd' housing for plugs & sockets operating on reduced voltages (24V 110V)
 NPT or other threads cable entry.
 Cable gland.

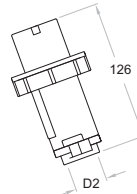
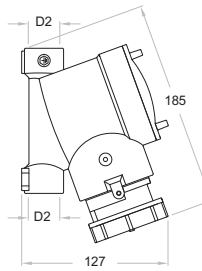


NMSP.. Sockets and Plugs

Dimensions are in mm.

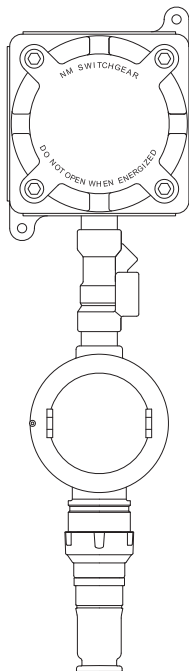


Sockets and plugs, 32 and 63 Amp
D1: M32, M40 or NPT equivalent

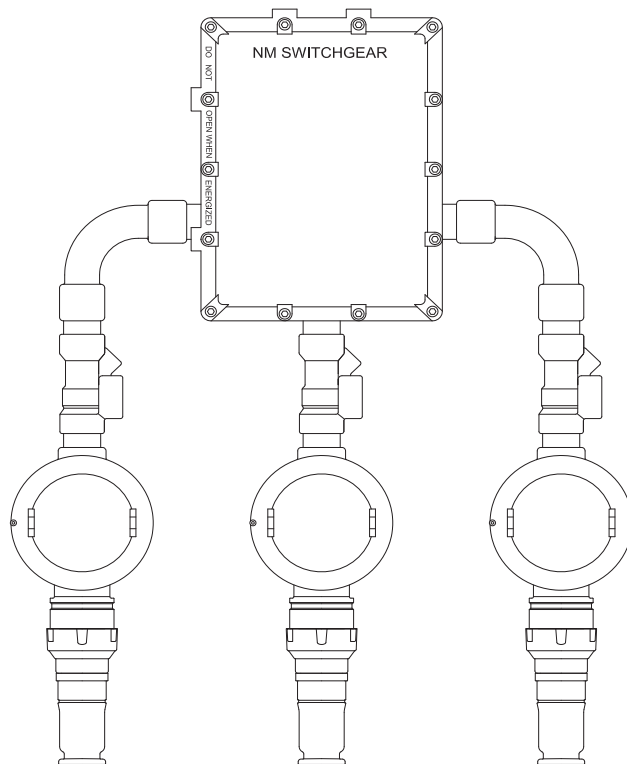


Sockets and plugs, 16 and 25 Amp
D2: M20, M25 or NPT equivalent

Plugs and sockets can be supplied directly connected to a voltage transformer, with or without supporting frame.



Single sockets and plugs
supplied from a transformer



Group sockets and plugs
supplied from a single transformer